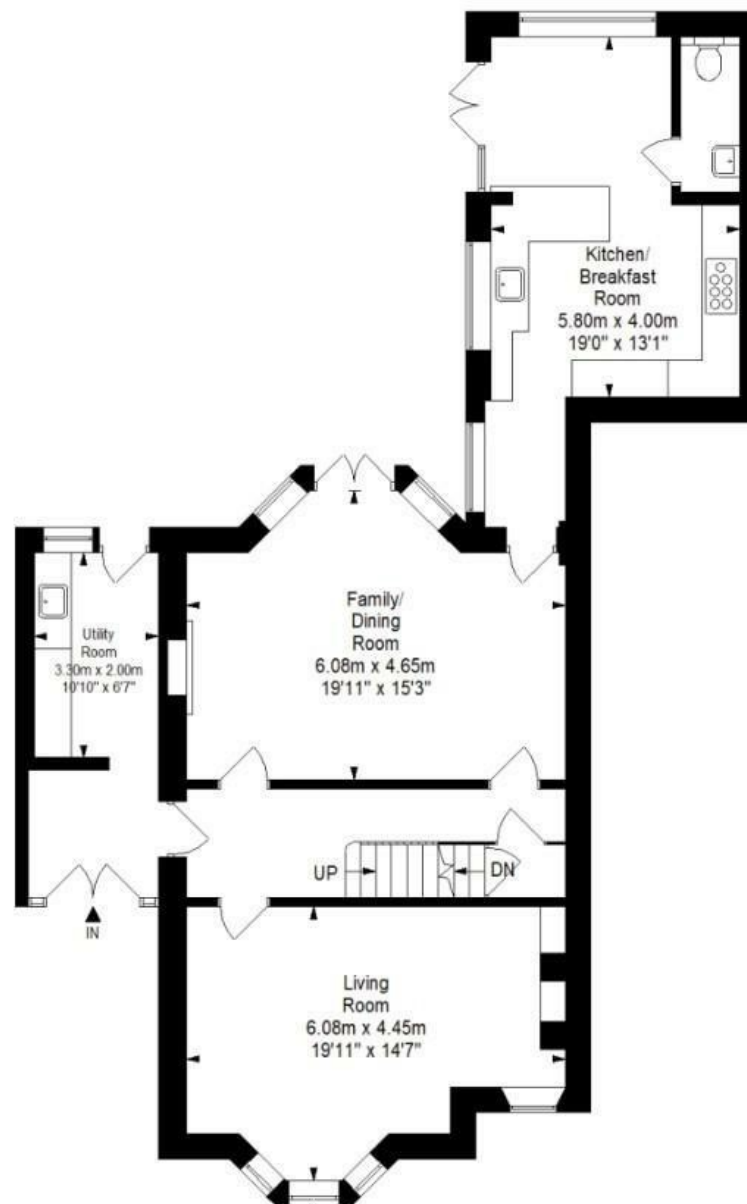


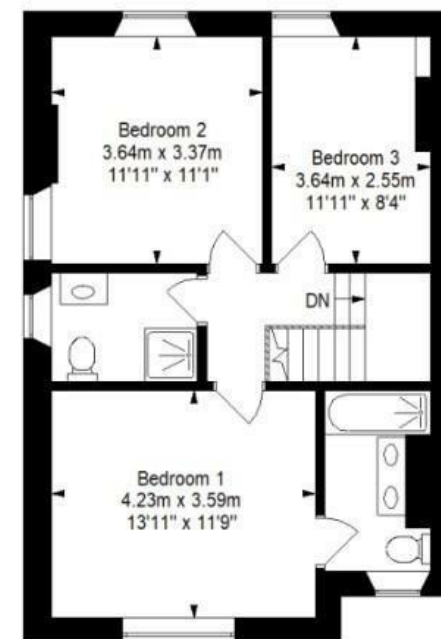
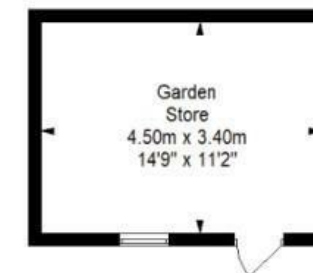
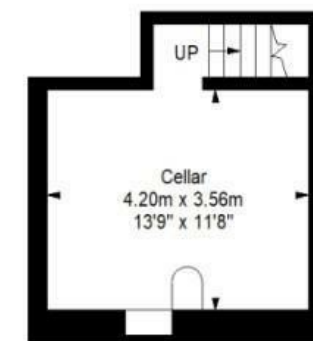
High Street

STAPLE HILL

APPROXIMATE FLOOR AREA
173.2 SQM / 1864.4 SQFT



GROUND FLOOR



FIRST FLOOR

Illustrations are for reference purposes only, measurements are approximate, not to scale.

Boardwalk

High Street

STAPLE HILL, BRISTOL



£550,000



3 Bedrooms



BS16 5HD



2 Bathrooms

"Moving on from this house won't be easy, we have loved living here and starting a family. We renovated it to a high standard and didn't anticipate having to move so soon. The storage space is invaluable for busy family life, and the layout of indoor-outdoor space flows perfectly when entertaining. The courtyard gets just the right amount of sun for barbecues and play dates. We will miss being able to walk to Page Park with our kids, and the incredible local bars and restaurants like Fed and the Crafty Egg. The Bristol to Bath Cycle Path only one minute away which is super convenient."

